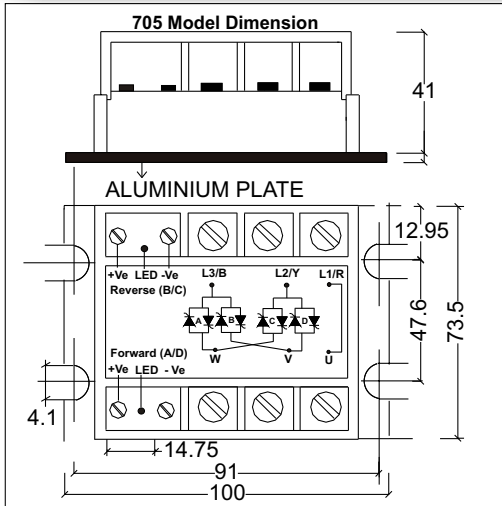


**705 2FR/3FR DC TO AC (Back to Back SCR)  
Forward & Reverse with Interlocking**



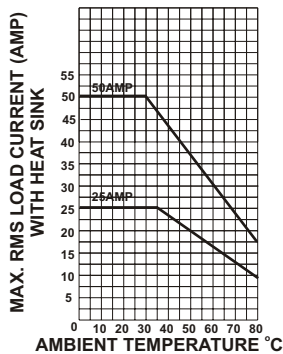
**S.S.R. Weight : @330 gms.**  
**Enclosure Material : Glass filled nylon**  
**(Flame Retardant)**

- ⇓ Panel mounted S.S.R.,
- ⇓ Input -output opto Isolation 2500Vrms
- ⇓ True Zero Cross Over / Random type
- ⇓ Virtually free from EMI / RFI
- ⇓ Input LED indicator : forward & reverse
- ⇓ Input TTL Compatibility
- ⇓ Noise less without chattering and Fast Switching
- ⇓ Output to body 4kV~ isolation
- ⇓ Transient voltage suppressors in built

**Precautions:**

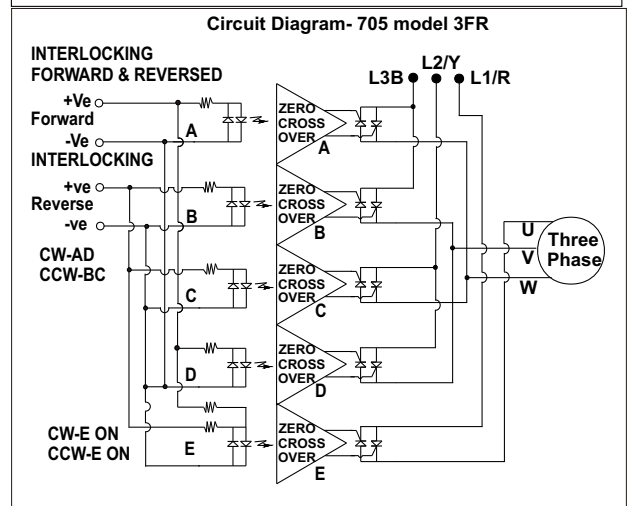
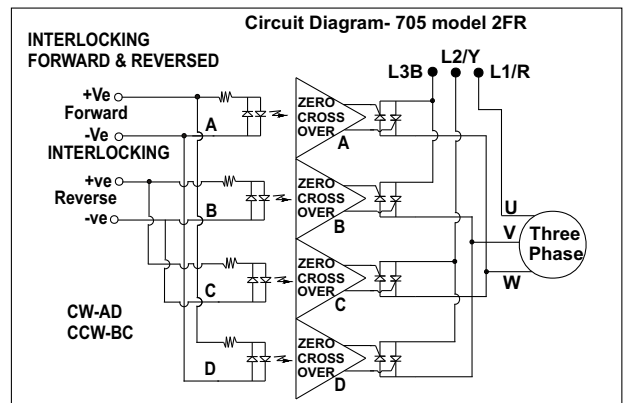
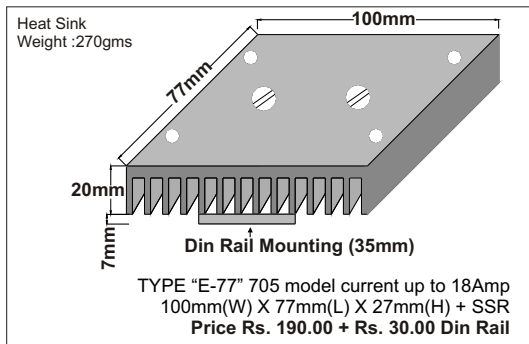
- ⇓ The 705-3FR model having negative (-Ve) common & positive(+ve) switching
- ⇓ The 705-2FR model having separate negative (-ve) & separate positive(+ve)
- ⇓ So anything can be made common
- ⇓ Heat Sink + Din Rail Mounting
- ⇓ If both input signal given Simultaneously then output of SSR will OFF/Motor OFF.(Interlocking)
- ⇓ Inbuilt snubber
- ⇓ Arcless Switching
- ⇓ Input Reverse polarity protection
- ⇓ Output N/O configuration

**THERMAL DERATING CURVE**



SSR TYPE NO	OUTPUT		3Phase Motor		Fusing current I²T	Motor protection circuit breaker (MPCB)	Type of Heat Sink	Indian@ Rs./Each 100nos>
	Voltage	Current amp AC51-20°C	HP	KW				
<b>2FR - DC TO AC INPUT : 9VDC TO 32VDC, Min. 6mA - Max.22mA</b>								
705 2FR ZDA 48 50 11	24 to 480VAC	50	7.5Hp	5.5Kw	3000A²S	16Amp	E	2200.00
<b>3FR - DC TO AC INPUT : 9VDC TO 32VDC, Min. 6mA - Max.22mA</b>								
705 3FR ZDA 48 25 11	24 to 480VAC	25	3Hp	2.25Kw	500A²S	6Amp	E	2100.00

11



**Technical Data**

Output circuit - Switching element		THYRISTOR	
Operational voltage range	Vrms	42-480VAC/690VAC	
Peak inverse voltage	Vpk	1200Vpk/1600Vpk	
Rated operational current	AC 51-20°C	IT	25AAC 50AAC
For utilization category	AC53a-55°C		15AAC
Frequency range	HZ	45-65Hz	
Max. off-state leakage current	mA	< 5 mArms	
Minimum load current holding current	IHO	175 mA	275 mA
Rated peak withstand current (t=10 ms)	ITSM	320A	800A
Max. Zero voltage turn on	Vpk	15	15
Max. load integral I²dt (t= 10 ms)	I²t	500A²S	3000A²S
Voltage drop in on-state	VTM	1.3V	1.3V
Critical current gradient	di/dt	100A/µs	100 A/µs
Critical voltage gradient	Dv/dt	350 V/µs	1500 V/µs
Thermal resistance Rth (Junction to case) DC	ØJC	1.1	1.0
Power factor	Cosφ	0.5 (at 600VAC)	
Maximum barrier-layer temperature		125 °C	
Input circuit-control circuit /rated control supply voltage		9-32VDC/	
Make voltage / Break voltage		9VDC	
Max. current consumption		22mA	
Switching times max zero cross over make/break		1period/1period	
Ambient temperature range operation		-30...+80 °C	
Test voltage between all isolated circuits (type test)		4kVA	
Electrical connection wire size		O/p. 16sqmm (max),I/p. 4sqmm	

Note : Prices & Specifications are subject to change without prior notice.