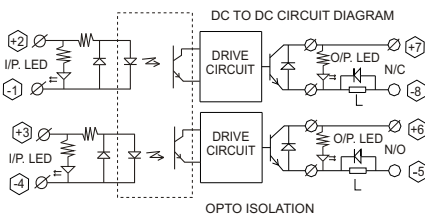
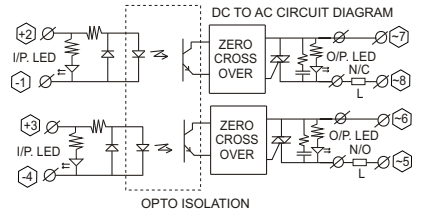


## DC TO AC / DC TO DC N/O - N/C CONTACTS

- ⇨ Panel mounted S.S.R.,
- ⇨ Opto Isolation 2500Vrms
- ⇨ Virtually free from EMI / RFI
- ⇨ Input LED indication/Output Reverse LED Indication for N/O & N/C
- ⇨ Input TTL Compatibility optionally CMOS Compatibility
- ⇨ Output to body 4kV~ isolation
- ⇨ Noise less without chattering and Fast Switching
- ⇨ Arcless Switching
- ⇨ Heat Sink + Din Rail Mounting (35mm)
- ⇨ Reverse polarity protection
- ⇨ Output N/O & N/C configuration
- ⇨ Inbuilt snubber



## 701 Model



S.S.R. Weight : @110 gms.

Enclosure Material : Glass filled nylon (Flame Retardant)

SSR TYPE NO	OUTPUT		EN-60947-4 Current amp with Heat Sink at 55°C	Fusing current I <sup>2</sup> T	Type of Heat Sink	Indian@ Rs./Each 100nos>
	Voltage	Current amp at 20°C				
<b>DC TO AC INPUT : 4VDC TO 32VDC, Min. 4mA - Max. 16mA,</b>						
701 NO/NC DA 33 25 00	24 to 330VAC	25	18Amp- AC	312A <sup>2</sup> S	J	550.00
701 NO/NC DA 33 40 00	330VAC	40	28Amp- AC	450A <sup>2</sup> S	B	800.00
<b>DC TO DC INPUT : 4VDC TO 32VDC, Min. 4mA - Max. 16mA,</b>						
701 NO/NC DD 06 03 00	60VDC	-	3Amp- DC	-	J	400.00
701 NO/NC DD 10 05 00	100VDC	-	5Amp- DC	-	J	500.00

25

### Technical Data

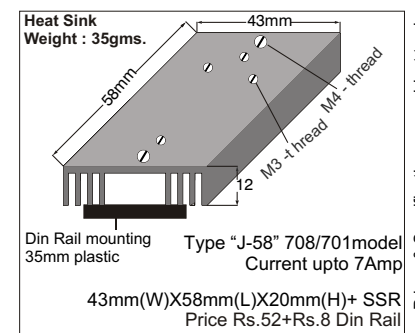
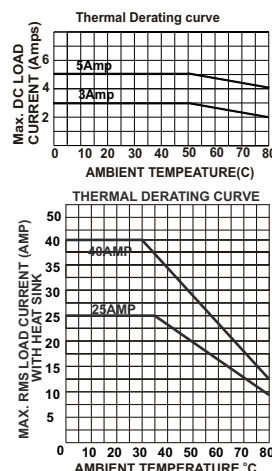
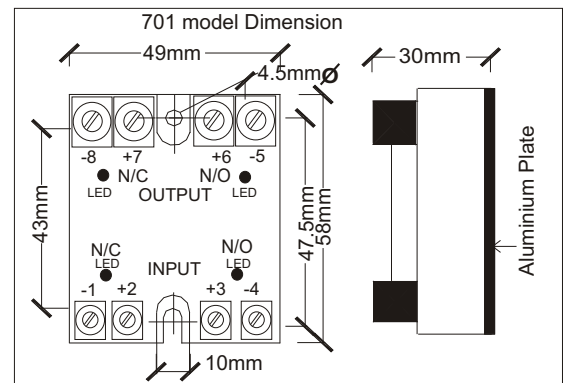
Input DC Voltage Min-Max	4-32VDC	DC Current Min-Max	4-16mA	Impedance	1.5k ohms
--------------------------	---------	--------------------	--------	-----------	-----------

### Output - DC

	3Amp	5Amp
Load Current (Amp)	3Amp	5Amp
Load Voltage	5-60	5-100
Surge Current(Amp) 1sec.	15	25
On state voltage drop @Rated current (VDC)	1	1.2
Off Voltage leakage at 100V(mA--max)	1.2	1.2
Turn ON/OFF time milli Second	4mS	4mS
Operating temperature °C	-30 to 80	-30 to 80

### Output AC:

	IT	AMP	25	40
RMS on state current at 20°C	VTM	VRMS	1.6	1.7
On state voltage drop @rated current	V	VRMS	30	30
Min. operating voltage	V	VRMS	30	30
Max. Zero voltage turn on		VPK	15	15
Peak one cycle surge on -50Hz state current (non - repetitive)	ITSM	A	250	300
Fusing current	I <sup>2</sup> T	A <sup>2</sup> S	312	450
Max. forward leakage current	IDRM	mA	12	12
Holding current	IHO	mA	75	75
Critical rate of rise off state voltage	dv/dt	V/μS	30	30
Thermal resistance Rth (Junction to case) DC	θJC	°C/W	2	1.2
Operating temperature		°C	-40to80	-40to80
Frequency range		HZ	47to63	47to63
Turn ON time max.	ms	10	10	10
Repetitive peak off state Voltage(VDRM)			800VPK	



Note : Prices & Specifications are subject to change without prior notice.