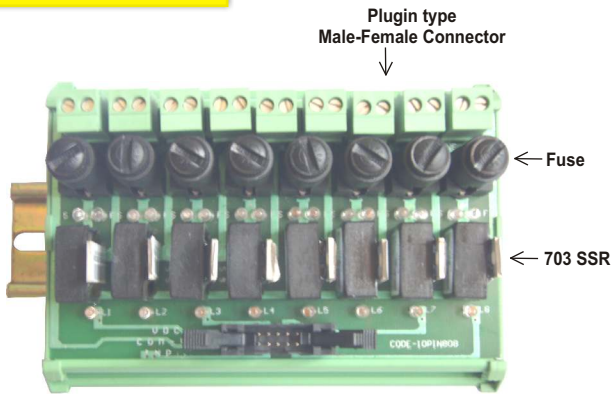


P.C.B. MOUNTED



UNI 703 PMDD 200 05 05 - 8 NOS SSR CARD

703 Model



S.S.R. Weight : @5 gms.

704 Model



S.S.R Weight : @20 gms.

706 Model

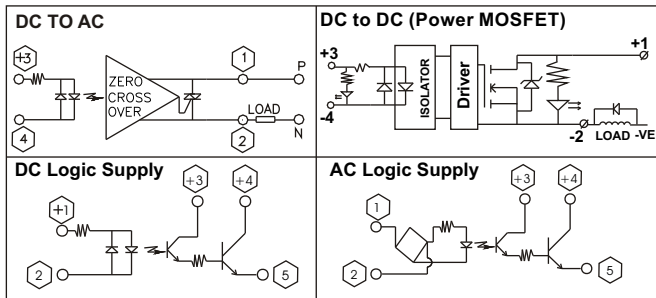


S.S.R Weight : @10 gms.

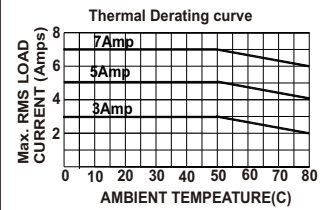
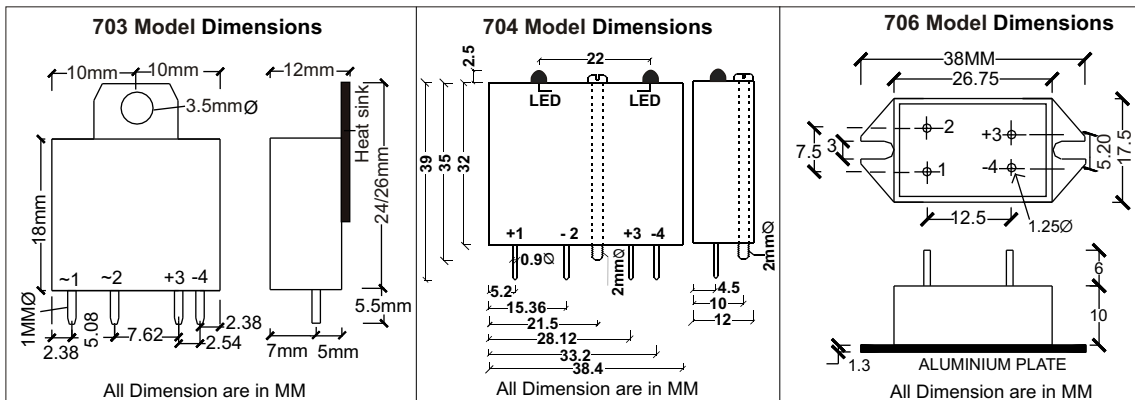
OPTIONAL ISOLATED HEAT SINK Price Rs. 20/-

Enclosure Material : Glass filled nylon (Flame Retardant)

| SSR TYPE NO | OUTPUT | | Indian @Rs./ Each100nos> |
|---|-----------|----------------------------|--------------------------|
| | Voltage | Current amp at 20°C | |
| DC TO AC INPUT : 5/12/24VDC Min. 5mA | | | |
| 703 ZDA 33 03 05 | 24-330VAC | 03Amp (Alternistor Triac) | 200.00 |
| 703 ZDA 48 05 05 | 24-480VAC | 05Amp (Alternistor Triac) | 325.00 |
| DC TO DC INPUT : 5/12/24VDC Min. 5mA | | | |
| 703 PMDD 200 05 05 | 200VDC | 05Amp (Power MOSFET) | 225.00 |
| DC TO AC INPUT : 3VDC TO 32VDC Min. 4mA - Max.16mA | | | |
| 704 ZDA 33 03 00 | 24-330VAC | 03 Amp (Alternistor Triac) | 225.00 |
| 704 ZDA 48 05 00 | 24-480VAC | 05 Amp (Back to Back SCR) | 330.00 |
| DC TO DC INPUT : 3VDC TO 32VDC Min. 4mA - Max.16mA | | | |
| 704 PMDD 200 05 00 | 200VDC | 05Amp (Power MOSFET) | 240.00 |
| LOGIC TYPE INPUT : 5VDC-0.8mA / 80-280VAC-5mA | | | |
| 704 DI 33 03 05 | 40VDC | 25mA (+5 VDC Logic) | 140.00 |
| 704 AI 33 03 28 | 40 VDC | 25mA (+5VDC Logic) | 150.00 |
| DC TO AC INPUT : 5/12/24VDC Min. 5mA | | | |
| 706 ZDA 33 07 05 | 24-330VAC | 07Amp (Alternistor Triac) | 210.00 |



13



Technical Data

| | | | | |
|--|------------------|---------------------|------|------|
| Output circuit - Switching element | | Alternistor Triac | | |
| Operational voltage range | Vrms | 24-330VAC/480VAC | | |
| Peak inverse voltage | Vpk | 700Vpk/1000Vpk | | |
| Rated operational current | IT | 3AAC | 5AAC | 7AAC |
| For utilization category | AC53a-55°C | | | |
| Frequency range | HZ | 45-65Hz | | |
| Max. off-state leakage current | mA | < 5 mArms | | |
| Minimum load current holding current | IHO | 50 mA | | |
| Rated peak withstand current (t=10 ms) | ITSM | 160A | | |
| Max. Zero voltage turn on | Vpk | 15 | | |
| Max. load integral I ² dt (t = 10 ms) | I ² t | 128A ² S | | |
| Voltage drop in on-state | VTM | 1.2V | | |
| Critical current gradient | di/dt | 50A/μs | | |
| Critical voltage gradient | Dv/dt | 500 V/μs | | |
| Thermal resistance Rth (Junction to case) DC | ΘJC | 2.1 | | |
| Power factor | Cosφ | 0.85(at 600VAC) | | |
| Maximum barrier-layer temperature | | 125 °C | | |
| Input circuit-control circuit/rated control supply voltage | | 4-32VDC | | |
| Make voltage / Break voltage | | 3.8VDC/1.2VDC | | |
| Max. current consumption | | 16mA | | |
| Switching times max zero cross over make/break | | 1period/1period | | |
| Ambient temperature range operation | | -30...+80 °C | | |
| Test voltage between all isolated circuits (type test) | | 2.5kVA | | |

- ⇒ P.C.B. mounted S.S.R.,
- ⇒ Opto Isolation 2500Vrms
- ⇒ Miniature S.S.R
- ⇒ True Zero cross over switching
- ⇒ Excellent resistance to fire.
- ⇒ Output N/O configuration Only.
- ⇒ Snubber less Triac.

| Output DC parameter Power MOSFET | | |
|--|------|-------|
| Safe continuous rating Id at 55°C | Amp | 05 |
| Drain-to-source break down voltage Vdss(BR) | VDC | 200 |
| Continuous Drain current Id@ Tc=25°C | Amp | 18 |
| Static drain-to-source ON resistance rDS(ON) | Ohm | 0.18 |
| Power dissipation Pd@ TC=25°C | W | 125 |
| Repetitive or non repetitive drain current | Amp | 70 |
| Peak diode recovery dv/dt | V/ns | 4 |
| Drain-to-source leakage current Idss | mA | 10 |
| Maximum junction temperature Tj(max) | °C | 150 |
| Thermal resistance junction to case Rthjc | °C/W | 1 |
| Turn ON delay time Td(ON) | μS | 300 |
| Turn OFF delay time Td(OFF) | μS | 300 |
| Input-Output body isolation voltage | KVA | 4 |
| Duty cycle (100%) | | 1 |
| ON Voltage drop less than at rated current | Vds | 1.7 |
| Square wave output | Hz | 400Hz |

Note : Prices & Specifications are subject to change without prior notice.