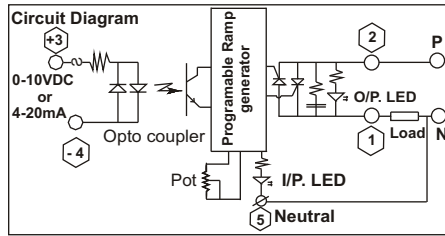
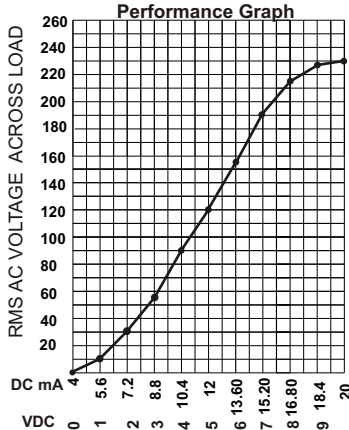


4-20mA Phase Angle Back to Back SCR

- ⇒ The load power is Proportional to controller input
- ⇒ Output to body 4kV~ isolation
- ⇒ Input to Output 2500Vrms isolation
- ⇒ Heat Sink + Din Rail Mounting (35mm)
- ⇒ Inbuilt Snubber network
- ⇒ Controlled range 10% to 90% of line voltage
- ⇒ Linearity Better than ±2% of the range.

Application

- ⇒ Glass Industries/Furnace Industries
- ⇒ Paper Industries
- ⇒ Hot runner system of plastic Processing Machinery
- ⇒ Polyester yarn processing industries
- ⇒ Biscuit Making Machine
- ⇒ Electroplating Machinery
- ⇒ Ceramic Industries



Precaution

- ⇒ Used for resistive/inductive transformer load only.
- ⇒ Do not give DC voltage at 4-20mA input control of SSR otherwise Input of SSR will fail.
- ⇒ Phase Line voltage should be in range of 230VAC ±10% or 440 vac ±10%
- ⇒ SSR will not work if heater connected in star without neutral
- ⇒ Heat sink temperatures should not increase 70°C
- ⇒ For dv/dt and transient voltage uses dv/dt snubber and metal oxide varistor externally
- ⇒ Protection : use semiconductor fuse for short circuit protection.
- ⇒ Phase angle varies so that Rth will change
- ⇒ So bigger size of Heat Sink is required

CE EN-60947-5-1 707 Model
←35mm Din Rail



S.S.R. Weight : @180 gms.

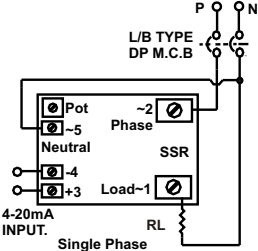
Enclosure Material : Glass filled nylon (Flame Retardant)

- ⇒ Line voltage variation
- ⇒ Balancing voltage in each phase at fixed input
- ⇒ To rectify the inductive values

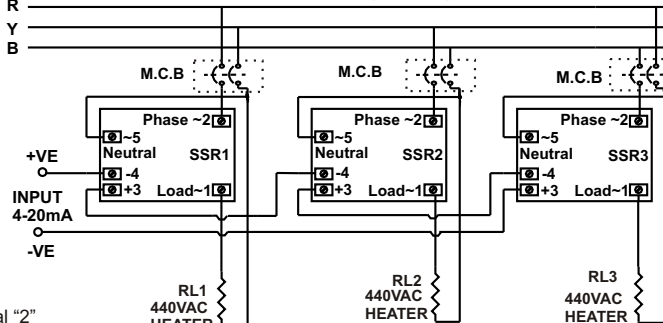
SSR TYPE NO	OUTPUT		EN-60947-4 Current Amp with Heat Sink at 55°C AC-3	Fusing current I ² T	Short Circuit Protection by "B" type M.C.B. In AC-3 duty	Type of Heat Sink	Indian@ Rs./Each 100nos>
	Voltage	Current amp at 20°C					
BACK TO BACK SCR - INPUT : 4mA -20mA or 0 to 10VDC PIV - 1200VPK							
707 PHT 24 25 420	230 VAC	25	12Amp	4	500A ² S	N	1300.00
707 PHT 24 50 420	±10%	50 AC-1	22Amp	15	3000A ² S	L	1500.00
707 PHT 24 100 420	Star	100 AC-1	42Amp	30	8000A ² S	X/L	2300.00
707 PHT 24 150 420	with	150 AC-1	85Amp	60	15000A ² S	W	3800.00
707 PHT 24 200 420	Neutral	200 AC-1	120Amp	90	25000A ² S	W	4000.00
BACK TO BACK SCR - INPUT : 4mA -20mA or 0 to 10VDC PIV - 1200VPK							
707 PHT 44 25 420	440 VAC	25	12Amp	4	500A ² S	N	1300.00
707 PHT 44 50 420	±10%	50 AC-1	22Amp	15	3000A ² S	L	1500.00
707 PHT 44 100 420	Delta	100 AC-1	42Amp	30	8000A ² S	X/L	2300.00
707 PHT 44 150 420	without	150 AC-1	85Amp	60	15000A ² S	W	3800.00
707 PHT 44 200 420	Neutral	200 AC-1	120Amp	90	25000A ² S	W	4000.00

21

Circuit Diagram for 707 model

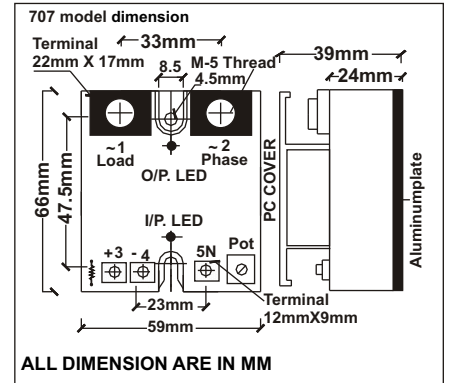


Connection in Delta (440VAC) Load



Precaution :

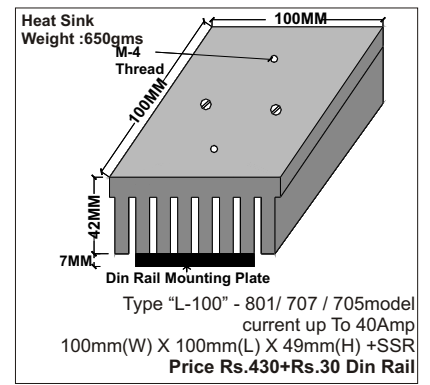
- ⇒ Please connect phase on terminal "2" only & Load on terminal "1" otherwise SSR will not operate.



Technical Data

		THYRISTOR				
Output circuit - Switching element		0-230VAC or 0-440VAC				
Operational voltage range	Vrms	1200Vpk				
Peak inverse voltage	Vpk	1200Vpk				
Rated operational current	IT	25AAC	50AAC	90AAC	150AAC	200AAC
		For utilization category AC53a-55°C				
Frequency range	HZ	50Hz				
Max. off-state leakage current	mA	< 5 mArms				
Minimum load current holding current	IHO	175 mA	275 mA	275 mA	250 mA	250 mA
Rated peak withstand current (t = 10 ms)	ITSM	320A	800A	1200A	1700A	2250A
Max. load integral I ² tdt (t = 10 ms)	I ² t	500A ² S	3000A ² S	7200A ² S	15000A ² S	25000A ² S
Voltage drop in on-state	VTM	3 to 4 V	3 to 4 V	3 to 4 V	3 to 4 V	3 to 4 V
Critical current gradient	di/dt	100A/μs	100 A/μs	150A/μs	150A/μs	150A/μs
Critical voltage gradient	Dv/dt	350 V/μs	1500 V/μs	1500 V/μs	1500 V/μs	1500 V/μs
Thermal resistance Rth (Junction to case) DC	ΘJC	2.3	2.5	2.5	2.8	2.8
Power factor	Cosφ	0.5 (at 600VAC)				
Maximum barrier-layer temperature		125 °C				
Input		4-20mA		0-10VDC		
Impedance		100 ohm		300 ohm		
Current Max. - Max.		4mA-21mA		0.2Vdc/7mA-12Vdc/10mA		
Ambient temperature range operation		-30...+80 °C				
Test voltage between all isolated circuits (type test)		4kVA				
Electrical connection wire size		O/p. 16sqmm (max.), I/p. 4sqmm(max.)				

* 3 NOS. Of SSR mounted on one heat sink type "W-250" with fan cooling for (3phase Application) of Rs. 3800/-



Note : Prices & Specifications are subject to change without prior notice.