

**Phase Angle by Pot with Neutral**

**VIBRATION UNIT with Neutral**

**Phase Angle by Pot & control with Neutral**

Fig 1



Fig 2



Fig 3



100k 10turn pot



Price Rs. 100/- extra

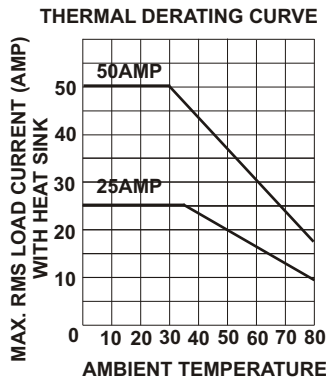
100k single turn pot



Pot with Knob & dial with screw terminal Price Rs. 300/- extra

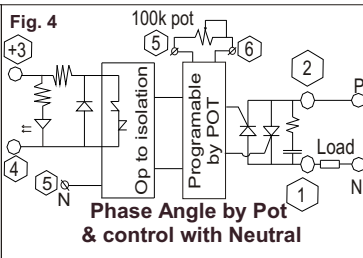
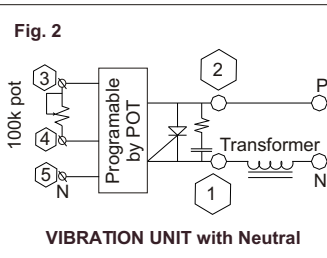
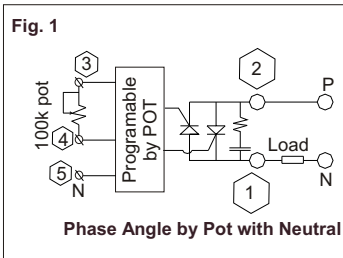
S.S.R. Weight : @110 gms.

Enclosure Material : Glass filled nylon (Flame Retardant)

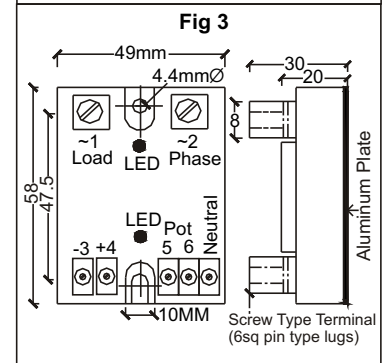
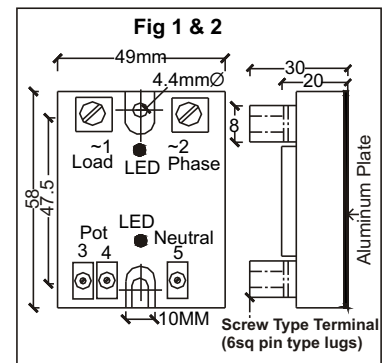


| TYPE NO  | OUTPUT       |                     | Load Current with Heat Sink at 55°C |      | Fusing current I <sup>2</sup> T | Type of Heat Sink | Indian@ Rs./Each 100nos> |
|--|--------------|---------------------|-------------------------------------|------|---------------------------------|-------------------|--------------------------|
|  | Voltage      | Current amp at 20°C | AC-3                                | AC-3 |                                 |                   |                          |
| <b>Phase Angle by Pot with Neutral INPUT : 0 to 100k ohm POT (Back to Back SCR) Fig -1</b> |              |                     |                                     |      |                                 |                   |                          |
| 701 POT 44 25 FULL   | 0 - 440 VAC  | 25                  | 20                                  | -    | 500A <sup>2</sup> S             | B                 | 700.00                   |
| 701 POT 44 50 FULL   |              | 50                  | 30                                  | 15   | 3000A <sup>2</sup> S            | C                 | 1100.00                  |
| 701 POT 44 90 FULL   |              | 90                  | 50                                  | 30   | 7200A <sup>2</sup> S            | C                 | 1400.00                  |
| <b>Vibration Unit with Neutral INPUT : 0 to 100k ohm Fig -2</b>                            |              |                     |                                     |      |                                 |                   |                          |
| 701 POT 33 25 HALF   | 0 - 240 VAC  | 25                  | 20                                  | -    | 500A <sup>2</sup> S             | B                 | 600.00                   |
| <b>Phase Angle by pot &amp; control with neutral INPUT: 5 TO 32VDC, 8mA-20mA, Fig -4</b>   |              |                     |                                     |      |                                 |                   |                          |
| 701 POT 48 25 00 CON   | 24 TO 440VAC | 25                  | 20                                  | -    | 500A <sup>2</sup> S             | B                 | 950.00                   |
| 701 POT 48 50 00 CON   |              | 50                  | 38                                  | 15   | 3000A <sup>2</sup> S            | C                 | 1100.00                  |

23



**Precaution :**  
 Please connect phase on terminal "2" only & Load on terminal "1" otherwise SSR will not operate.



**Technical Data**

| Output circuit - Switching element                          |                  | THYRISTOR                            |                      |                      |
|---|------------------|--------------------------------------|----------------------|----------------------|
| Operational voltage range                                   | Vrms             | 0-440VAC/0-240VAC/24-440VAC          |                      |                      |
| Peak inverse voltage  | Vpk              | 1200Vpk                              |                      |                      |
| Rated operational current                                   | IT               | 25AAC                                | 50AAC                | 90AAC                |
|   |                  | For utilization category AC53a-55°C  |                      |                      |
| Frequency range   | HZ               | 50 Hz                                |                      |                      |
| Max. off-state leakage current                              | mA               | < 5 mArms                            |                      |                      |
| Minimum load current holding current                        | IHO              | 175 mA                               | 275 mA               | 275 mA               |
| Rated peak withstand current (t = 10 ms)                    | ITSM             | 320A                                 | 800A                 | 1200A                |
| Max. Zero voltage turn on                                   | Vpk              | 15                                   | 15                   | 15                   |
| Max. load integral I <sup>2</sup> dt (t = 10 ms)            | I <sup>2</sup> t | 500A <sup>2</sup> S                  | 3000A <sup>2</sup> S | 7200A <sup>2</sup> S |
| Voltage drop in on-state                                    | VTM              | 3 to 4V                              | 3 to 4V              | 3 to 4V              |
| Critical current gradient                                   | di/dt            | 100A/μs                              | 100 A/μs             | 150A/μs              |
| Critical voltage gradient                                   | Dv/dt            | 350 V/μs                             | 1500 V/μs            | 1500 V/μs            |
| Thermal resistance Rth (Junction to case) DC                | ØJC              | 2.3                                  | 2.5                  | 2.7                  |
| Power factor  | Cosφ             | 0.5 (at 600VAC)                      |                      |                      |
| Maximum barrier-layer temperature                           |                  | 125 °C                               |                      |                      |
| Input circuit-control circuit /rated control supply voltage |                  | 0-100k ohm POT /5-32VDC              |                      |                      |
| Max. current consumption                                    |                  | 16mA                                 |                      |                      |
| Ambient temperature range operation                         |                  | -30...+80 °C                         |                      |                      |
| Test voltage between all isolated circuits (type test)      |                  | 4kVA                                 |                      |                      |
| Electrical connection wire size                             |                  | O/p. 16sqmm (max.), I/p. 4sqmm(max.) |                      |                      |

Note : Prices & Specifications are subject to change without prior notice.